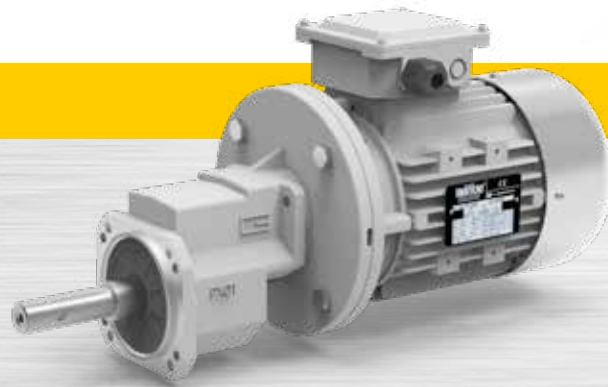
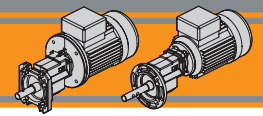


Poultry&Pig  **Tecno**
The gearmotors for farm equipment

Motoriduttori monostadio
Single stage gearmotors

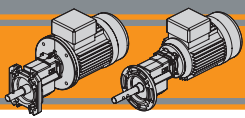




Indice	Index	Inhaltsverzeichnis	Índice	Índice	索引	Pagina Page Seite Página Pagina 页
Descrizione	<i>Description</i>	Beschreibung	<i>Descripción</i>	Descrição	介绍	A2
Designazione	<i>Classification</i>	Klassifikation	<i>Clasificación</i>	Designação	选型	A3
Lubrificazione	<i>Lubrication</i>	Schmierung	<i>Lubricación</i>	Lubrificação	润滑油	A3
Simbologia	<i>Symbols</i>	Symbole	<i>Simbología</i>	Simbologia	代号说明	A3
Dati Tecnici 50 Hz	<i>Technical data 50 Hz</i>	Technische Daten 50 Hz	<i>Datos técnicos 50 Hz</i>	Dados Tecnicos 50 Hz	技术参数 50Hz	A4
Dati Tecnici 60 Hz	<i>Technical data 60 Hz</i>	Technische Daten 60 Hz	<i>Datos técnicos 60 Hz</i>	Dados Tecnicos 60 Hz	技术参数 60Hz	A5
Dimensioni	<i>Dimensions</i>	Abmessungen	<i>Dimensiones</i>	Dimensões	尺寸规格	A10

Questa sezione annulla e sostituisce ogni precedente edizione o revisione. Qualora questa sezione non Vi sia giunta in distribuzione controllata, l'aggiornamento dei dati ivi contenuto non è assicurato. **In tal caso la versione più aggiornata è disponibile sul nostro sito internet www.transtecno.com**

This section replaces any previous edition and revision. If you obtained this catalogue other than through controlled distribution channels, the most up to date content is not guaranteed. In this case the latest version is available on our web site www.transtecno.com

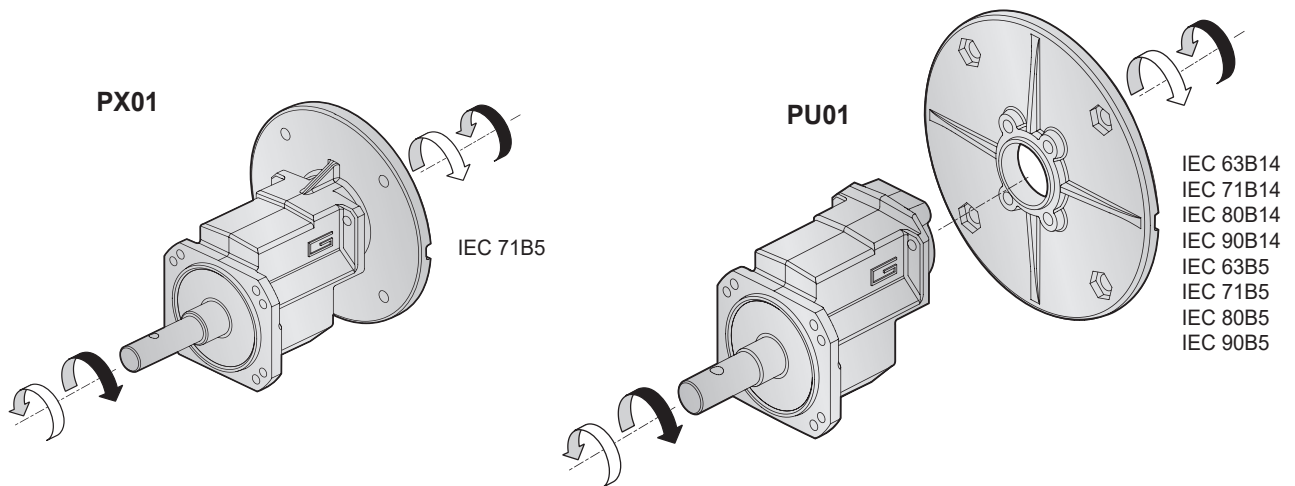


PX-PU

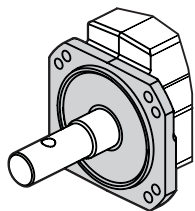
Motoriduttori monostadio Single stage gearmotors

Descrizione	Description	Beschreibung	Descripción	Descrição	介绍
<p>I motoriduttori PX-PU sono stati pensati per le linee di alimentazione del settore avicolo. Sono motoriduttori monostadio con carcassa in alluminio lasciando comunque libero il cliente di personalizzare flange e alberi/manicotti sia in entrata che in uscita secondo le proprie esigenze.</p>	<p>The PX-PU gearmotors have been specifically designed for feeding systems in poultry farms. All gearmotors have been made up with diecast aluminum housing and single stage helical gears. A wide selection of input/output flanges and shafts is available in order to satisfy each customer's specific demand.</p>	<p>Die Getriebemotoren PX-PU wurde speziell für Fütterungssysteme in Geflügelfarmen entwickelt. Alle Getriebemotoren bestehen aus einem Druckguss Aluminiumgehäuse und einstufigen Stirnrädern. Eine große Auswahl an Antriebs- und Abtriebs-Flanschen und Wellen stehen für kundenspezifische Anforderungen zur Verfügung.</p>	<p>Los motorreductores PX-PU han sido pensados para las líneas de alimentación del sector avícola. Son motorreductores de etapa única con caja en aluminio, dejando al cliente la libertad de personalizar bridas y ejes/manguitos tanto en entrada como en salida, según sus propias necesidades.</p>	<p>Os motoredutores PX-PU foram pensados para as linhas de alimentação do setor avicultor. São motoredutores mono estágio, com carcaça em alumínio, deixando o cliente livre para personalizar flanges eixos alças, seja na entrada que na saída segundo a necessidade do cliente.</p>	<p>PX-PU系列減速電機用於畜牧場專為進料系統設計，所有減速電機都是壓鑄鋁合金箱加一種單級斜齒輪減速機機器。可以安裝在許多不同的輸入和輸出法蘭類型和連接軸，以滿足客戶具體需求。</p>

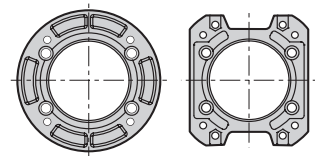
Flange d'entrata - Input flanges - Antriebsflansche - Bridas de entrada - Flange de entrada - 输入法兰
Sensi di rotazione - Direction of rotation - Drehrichtung - Sentido de rotación - Sentido de rotação - 运转方向



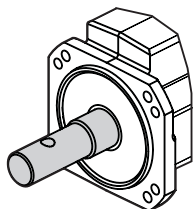
Flange d'uscita - Output flanges - Abtriebsflansche - Bridas de saída - Flange de saída - 输出法兰



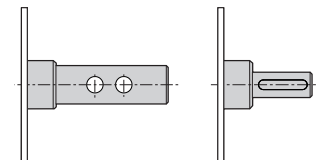
Realizzate a richiesta del cliente
Customizable upon request
 Kundenanpassung auf Anfrage
Personalizable bajo petición del cliente
 Projetada em base à necessidade do cliente
 可按客户要求定制

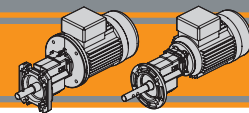


Alberi d'uscita - Output shafts - Abtriebswellen - Ejes de salida - Eixo de saída - 输出轴

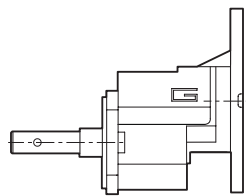


Realizzati a richiesta del cliente
Customizable upon request
 Kundenanpassung auf Anfrage
Personalizable bajo petición del cliente
 Projetada em base à necessidade do cliente
 可按客户要求定制

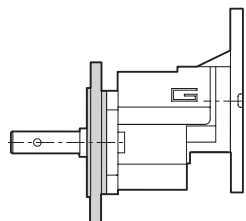




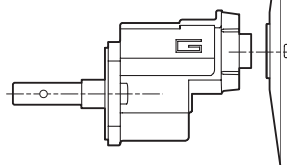
Designazione Classification Klassifikation Clasificación Designação 选型



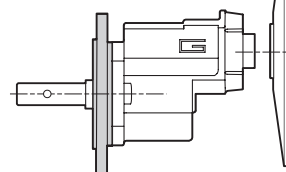
PX01 U



PX01 F



PU01 U



PU01 F

Riduttore / Gearbox / Getriebe / Reductor / Redutores / 减速机

PU	01	3,19	FT1	P71B5	O1
Tipo Type Tip Tipo Tipo 种类	Grandezza Size Größe Tamaño Tamanho 型号	Rapporto Ratio Übersetzung Relación de reducción Redução 速比	Versione riduttore Gearbox version Getriebeversion Versión reductor Versão reductor 置式	IEC 	Albero d'uscita Output shaft Abtriebswelle Eje de salida Eixo de saída 输出轴
PX	01	Vedi tabelle See tables Siehe Tabellen Vease tablas Ver tabela 见表格	Vedi tabelle See tables Siehe Tabellen Vease tablas Ver tabela 见表格	P71B5	Vedi tabelle See tables Siehe Tabellen Vease tablas Ver tabela 见表格
PU				P63 P90 ...	

Motore / Motor / Motor / Motor / Motor / 电机

0.37kW	4p	3ph	230/400V	50Hz	T1
Potenza Power Leistung Potencia Potência 功率	Poli Poles Pole Polos Polos 极数	Fasi Phases Phasen Fases Fases 相数	Tensione Voltage Spannung Tensión Tensão 电压	Frequenza Frequency Frequenz Frecuencia Frequência 频率	Pos. morsettiera Terminal box pos. Position Klemmenkasten Posición Caja de Bornes Posição Bloco terminal 接线盒位置
Vedi tabelle See tables Siehe Tabellen Vease tablas Ver tabela 见表格	2p 4p 6p 8p	1ph 3ph	230/400V 220/380V ... 230V ...	50Hz 60Hz	T1 (Std) T4 T3

Lubrificazione Lubrication Schmierung Lubricación Lubrificação 润滑油

I motoriduttori PX e PU sono forniti completi di lubrificante sintetico viscosità 320 e non necessitano di manutenzione.

Permanent synthetic oil long-life lubrication (viscosity grade 320) on both PX and PU gearmotors.

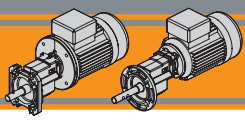
Dauerschmierung mit Long-life Synthetiköl (Viskositätsgrad 320) für Getriebemotoren PX und PU.

Los motorreductores PX y PU se proporcionan completos de lubricante sintético viscosidad 320 y no necesitan mantenimiento.

Os motoredutores PX e PU são fornecidos já com lubrificante sintético, com viscosidade de 320 não necessitando.

PX 和PU系列减速机均使用长寿命合成润滑油(粘度320)。

	Simbologia	Symbols	Symbole	Simbología	Simbologia	代号说明
n_1 [min ⁻¹]	Velocità in ingresso	Input speed	Eingangsdrehzahl	Velocidad de entrada	Velocidade de entrada	输入转速
n_2 [min ⁻¹]	Velocità in uscita	Output speed	Ausgangsdrehzahl	Velocidad de salida	Velocidade de saída	输出转速
i	Rapporto di riduzione	Ratio	Übersetzung	Relación de reducción	Relação de redução	速比
P_1 [kW]	Potenza in ingresso	Input power	Eingangsleistung	Potencia en entrada	Potência de entrada	输入功率
M_2 [Nm]	Coppia nominale	Nominal torque	Nennmoment	Par nominal	Torque	额定扭矩
sf	Fattore di servizio	Service factor	Servicefaktor	Factor de servicio	Fator de serviço	使用系数



PX-PU

Motoriduttori monostadio Single stage gearmotors

Dati tecnici

Technical data


Technische Daten

Datos técnicos

Dados técnicos

技术参数

[IEC - 50 Hz - n_1 1400 min⁻¹]

	n_2 [min ⁻¹]	Mn_2 [Nm]	Pn_1 [kW]	i
PX01 - PU01				
	888	40	3.8	1.58
	732	40	3.2	1.91
	596	40	2.6	2.35
	560	40	2.4	2.50
	467	50	2.5	3.00
	439	50	2.4	3.19
	370	50	2.0	3.79
	356	50	1.9	3.93
	295	50	1.6	4.75
	275	50	1.5	5.09
	246	50	1.3	5.70
	190	40	0.82	7.38
	178	40	0.77	7.88
	163	40	0.71	8.57
	145	35	0.55	9.67

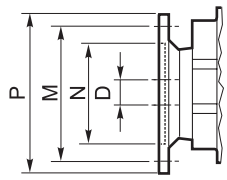
IEC Motore applicabile / IEC Motor inputs available IEC Anwendbarer Motor / IEC Motor Aplicabile IEC Motor aplicável / IEC 电机适配法兰			
63 B5/B14	71 B5/B14	80 B5/B14	90 B5/B14
B			
B			
B			
B			
B			
B			
B			
B			
B			
B			
B			
B			*
B			*
B			*
B			*

B = Boccola di riduzione in acciaio; **B** = Metal shaft sleeve; **B** = Metal-Wellenhülse;
B = casquillo de reducción en acero; **B** = Bucha de redução em aço; **B** = 金属轴套

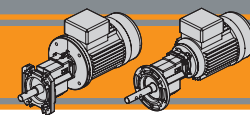
■ Rapporti preferenziali - Preferred ratios - Vorzugsübersetzungen - Relaciones de reducción preferenciales - Relações preferenciais - 常用速比

■ Motore applicabile - Motor inputs available - Anwendbarer Motor - Motor Aplicabile - Motor aplicável - 电机适配法兰


* Contattare il servizio tecnico - Please contact the technical service - Kontaktieren Sie unsere technische Abteilung
 Ponerse en contacto con el departamento técnico - Contate nosso escritório técnico - 请咨询我司技术部门



Dimensioni IEC / IEC Dimensions / IEC Abmessungen / Dimensiones IEC / Dimensões IEC / IEC尺寸规格								
	63 B5	63 B14	71 B5	71 B14	80 B5	80 B14	90 B5	90 B14
N	95	60	110	70	130	80	130	95
M	115	75	130	85	165	100	165	115
P	140	90	160	105	200	120	200	140
D	11		14		19		24	



[IEC - 60 Hz - n_1 1750 min⁻¹]

	n_2 [min ⁻¹]	Mn_2 [Nm]	Pn_1 [kW]	i
PX01 - PU01				
	1110	37	4.5	1.58
	915	37	3.7	1.91
	745	37	3.0	2.35
	700	37	2.8	2.50
	583	47	2.9	3.00
	549	47	2.8	3.19
	462	47	2.3	3.79
	445	47	2.2	3.93
	368	47	1.8	4.75
	344	47	1.7	5.09
	307	47	1.5	5.70
	237	37	0.95	7.38
	222	37	0.89	7.88
	204	37	0.82	8.57
	181	33	0.64	9.67

IEC Motore applicabile / IEC Motor inputs available IEC Anwendbarer Motor / IEC Motor Aplicabile IEC Motor aplicável / IEC 电机适配法兰			
63 B5/B14	71 B5/B14	80 B5/B14	90 B5/B14
B			
B			
B			
B			
B			
B			
B			
B			
B			
B			
B			*
B			*
B			*
B			*

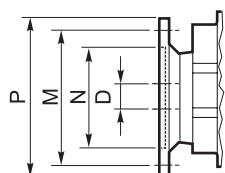
PX-PU

B = Boccola di riduzione in acciaio; B = Metal shaft sleeve; B = Metal-Wellenhülse;
B = casquillo de reducción en acero; B = Bucha de redução em aço; B = 金属轴套

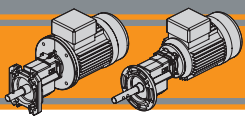
■ Rapporti preferenziali - Preferred ratios - Vorzugsübersetzungen - Relaciones de reducción preferenciales - Relações preferenciais - 常用速比

■ Motore applicabile - Motor inputs available - Anwendbarer Motor - Motor Aplicabile - Motor aplicável - 电机适配法兰

* Contattare il servizio tecnico - Please contact the technical service - Kontaktieren Sie unsere technische Abteilung
Ponerse en contacto con el departamento técnico - Contate nosso escritório técnico - 请咨询我司技术部门



Dimensioni IEC / IEC Dimensions / IEC Abmessungen / Dimensiones IEC / Dimensões IEC / IEC尺寸规格								
	63 B5	63 B14	71 B5	71 B14	80 B5	80 B14	90 B5	90 B14
N	95	60	110	70	130	80	130	95
M	115	75	130	85	165	100	165	115
P	140	90	160	105	200	120	200	140
D	11		14		19		24	



PX-PU

Motoriduttori monostadio Single stage gearmotors

Dati tecnici

Technical data

Technische Daten

Datos técnicos

Dados técnicos

技术参数

[IEC - 50 Hz - n_1 1400 min⁻¹]

P ₁ [kW]	n ₂ [min ⁻¹]	M ₂ [Nm]	sf	i		
------------------------	--	------------------------	----	---	---	---

P ₁ [kW]	n ₂ [min ⁻¹]	M ₂ [Nm]	sf	i		
------------------------	--	------------------------	----	---	---	---

0.12

P ₁ [kW]	n ₂ [min ⁻¹]	M ₂ [Nm]	sf	i	PU01	B5/B14
63A4	888	1.3	32	1.58	PU01	B5/B14
(1400 min ⁻¹)	732	1.5	26	1.91		B5/B14
	596	1.9	21	2.35		B5/B14
	560	2.0	20	2.50		B5/B14
	467	2.4	21	3.00		B5/B14
	439	2.5	20	3.19		B5/B14
	370	3.0	17	3.79		B5/B14
	356	3.1	16	3.93		B5/B14
	295	3.8	13	4.75		B5/B14
	275	4.0	12	5.09		B5/B14
	246	4.5	11	5.70		B5/B14
	190	5.9	6.8	7.38		B5/B14
	178	6.3	6.4	7.88		B5/B14
	163	6.8	5.9	8.57		B5/B14
	145	7.7	4.6	9.67		B5/B14

0.25

P ₁ [kW]	n ₂ [min ⁻¹]	M ₂ [Nm]	sf	i	PX-PU01	B5/B14
71A4	888	2.6	15.3	1.58	PX-PU01	B5/B14
(1400 min ⁻¹)	732	3.2	12.6	1.91		B5/B14
	596	3.9	10.3	2.35		B5/B14
	560	4.1	9.7	2.50		B5/B14
	467	5.0	10.1	3.00		B5/B14
	439	5.3	9.5	3.19		B5/B14
	370	6.3	8.0	3.79		B5/B14
	356	6.5	7.7	3.93		B5/B14
	295	7.9	6.4	4.75		B5/B14
	275	8.4	5.9	5.09		B5/B14
	246	9.4	5.3	5.70		B5/B14
	190	12	3.3	7.38		B5/B14
	178	13	3.1	7.88		B5/B14
	163	14	2.8	8.57		B5/B14
	145	16	2.2	9.67		B5/B14

0.18

P ₁ [kW]	n ₂ [min ⁻¹]	M ₂ [Nm]	sf	i	PU01	B5/B14
63B4	888	1.9	21	1.58	PU01	B5/B14
(1400 min ⁻¹)	732	2.3	18	1.91		B5/B14
	596	2.8	14	2.35		B5/B14
	560	3.0	13	2.50		B5/B14
	467	3.6	14	3.00		B5/B14
	439	3.8	13	3.19		B5/B14
	370	4.5	11	3.79		B5/B14
	356	4.7	11	3.93		B5/B14
	295	5.7	8.8	4.75		B5/B14
	275	6.1	8.2	5.09		B5/B14
	246	6.8	7.4	5.70		B5/B14
	190	8.8	4.6	7.38		B5/B14
	178	9.4	4.3	7.88		B5/B14
	163	10	3.9	8.57		B5/B14
	145	12	3.0	9.67		B5/B14

0.37

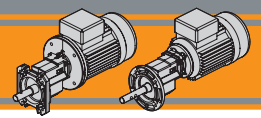
P ₁ [kW]	n ₂ [min ⁻¹]	M ₂ [Nm]	sf	i	PX-PU01	B5/B14
71B4	888	3.9	10.4	1.58	PX-PU01	B5/B14
(1400 min ⁻¹)	732	4.7	8.5	1.91		B5/B14
	596	5.8	7.0	2.35		B5/B14
	560	6.1	6.5	2.50		B5/B14
	467	7.3	6.8	3.00		B5/B14
	439	7.8	6.4	3.19		B5/B14
	370	9.3	5.4	3.79		B5/B14
	356	10	5.2	3.93		B5/B14
	295	12	4.3	4.75		B5/B14
	275	12	4.0	5.09		B5/B14
	246	14	3.6	5.70		B5/B14
	190	18	2.2	7.38		B5/B14
	178	19	2.1	7.88		B5/B14
	163	21	1.9	8.57		B5/B14
	145	24	1.5	9.67		B5/B14

0.22

P ₁ [kW]	n ₂ [min ⁻¹]	M ₂ [Nm]	sf	i	PU01	B5/B14
63C4	888	2.3	17	1.58	PU01	B5/B14
(1400 min ⁻¹)	732	2.8	14	1.91		B5/B14
	596	3.4	12	2.35		B5/B14
	560	3.6	11	2.50		B5/B14
	467	4.4	11	3.00		B5/B14
	439	4.6	11	3.19		B5/B14
	370	5.5	9.1	3.79		B5/B14
	356	5.7	8.7	3.93		B5/B14
	295	6.9	7.2	4.75		B5/B14
	275	7.4	6.7	5.09		B5/B14
	246	8.3	6.0	5.70		B5/B14
	190	10.7	3.7	7.38		B5/B14
	178	11.5	3.5	7.88		B5/B14
	163	12.5	3.2	8.57		B5/B14
	145	14.1	2.5	9.67		B5/B14

0.55

P ₁ [kW]	n ₂ [min ⁻¹]	M ₂ [Nm]	sf	i	PX-PU01	B5/B14
71C4	888	5.7	7.0	1.58	PX-PU01	B5/B14
(1400 min ⁻¹)	732	7.0	5.7	1.91		B5/B14
	596	8.6	4.7	2.35		B5/B14
	560	9.1	4.4	2.50		B5/B14
	467	11	4.6	3.00		B5/B14
	439	12	4.3	3.19		B5/B14
	370	14	3.6	3.79		B5/B14
	356	14	3.5	3.93		B5/B14
	295	17	2.9	4.75		B5/B14
	275	19	2.7	5.09		B5/B14
	246	21	2.4	5.70		B5/B14
	190	27	1.5	7.38		B5/B14
	178	29	1.4	7.88		B5/B14
	163	31	1.3	8.57		B5/B14
	145	35	1.0	9.67		B5/B14



[IEC - 50 Hz - n_1 1400 min⁻¹]

P ₁ [kW]	n ₂ [min ⁻¹]	M ₂ [Nm]	sf	i		
------------------------	--	------------------------	----	---	---	---

P ₁ [kW]	n ₂ [min ⁻¹]	M ₂ [Nm]	sf	i		
------------------------	--	------------------------	----	---	---	---

0.55

80A4 (1400 min ⁻¹)	888	5.7	7.0	1.58	PU01	B5/B14
	732	7.0	5.7	1.91		B5/B14
	596	8.6	4.7	2.35		B5/B14
	560	9.1	4.4	2.50		B5/B14
	467	11	4.6	3.00		B5/B14
	439	12	4.3	3.19		B5/B14
	370	14	3.6	3.79		B5/B14
	356	14	3.5	3.93		B5/B14
	295	17	2.9	4.75		B5/B14
	275	19	2.7	5.09		B5/B14
	246	21	2.4	5.70		B5/B14
	190	27	1.5	7.38		B5/B14
	178	29	1.4	7.88		B5/B14
	163	31	1.3	8.57		B5/B14
	145	35	1.0	9.67		B5/B14

1.1

80C4 90S4 (1400 min ⁻¹)	888	11	3.5	1.58	PU01	B5/B14
	732	14	2.9	1.91		B5/B14
	596	17	2.3	2.35		B5/B14
	560	18	2.2	2.50		B5/B14
	467	22	2.3	3.00		B5/B14
	439	23	2.2	3.19		B5/B14
	370	28	1.8	3.79		B5/B14
	356	29	1.7	3.93		B5/B14
	295	35	1.4	4.75		B5/B14
	275	37	1.3	5.09		B5/B14
	246	41	1.2	5.70		B5/B14

1.5

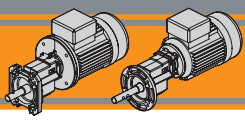
90B4 (1400 min ⁻¹)	888	16	2.6	1.58	PU01	B5/B14
	732	19	2.1	1.91		B5/B14
	596	23	1.7	2.35		B5/B14
	560	25	1.6	2.50		B5/B14
	467	30	1.7	3.00		B5/B14
	439	32	1.6	3.19		B5/B14
	370	37	1.3	3.79		B5/B14
	356	39	1.3	3.93		B5/B14
	295	47	1.1	4.75		B5/B14
	275	50	1.0	5.09		B5/B14

0.75

71D4 (1400 min ⁻¹)	888	7.8	5.1	1.58	PX-PU01	B5/B14
	732	9.5	4.2	1.91		B5/B14
	596	12	3.4	2.35		B5/B14
	560	12	3.2	2.50		B5/B14
	467	15	3.4	3.00		B5/B14
	439	16	3.2	3.19		B5/B14
	370	19	2.7	3.79		B5/B14
	356	19	2.6	3.93		B5/B14
	295	24	2.1	4.75		B5/B14
	275	25	2.0	5.09		B5/B14
	246	28	1.8	5.70		B5/B14
	190	37	1.1	7.38		B5/B14
	178	39	1.0	7.88		B5/B14

0.75

80B4 (1400 min ⁻¹)	888	7.8	5.1	1.58	PU01	B5/B14
	732	9.5	4.2	1.91		B5/B14
	596	12	3.4	2.35		B5/B14
	560	12	3.2	2.50		B5/B14
	467	15	3.4	3.00		B5/B14
	439	16	3.2	3.19		B5/B14
	370	19	2.7	3.79		B5/B14
	356	19	2.6	3.93		B5/B14
	295	24	2.1	4.75		B5/B14
	275	25	2.0	5.09		B5/B14
	246	28	1.8	5.70		B5/B14
	190	37	1.1	7.38		B5/B14
	178	39	1.0	7.88		B5/B14



[IEC - 60 Hz - n_1 1750 min⁻¹]

P ₁ [kW]	n ₂ [min ⁻¹]	M ₂ [Nm]	sf	i		
------------------------	--	------------------------	----	---	---	---

P ₁ [kW]	n ₂ [min ⁻¹]	M ₂ [Nm]	sf	i		
------------------------	--	------------------------	----	---	---	---

0.12

63A4 (1750 min ⁻¹)	1110	1.0	37	1.58	PU01	B5/B14
	915	1.2	31	1.91		B5/B14
	745	1.5	25	2.35		B5/B14
	700	1.6	23	2.50		B5/B14
	583	1.9	24	3.00		B5/B14
	549	2.0	23	3.19		B5/B14
	462	2.4	19	3.79		B5/B14
	445	2.5	19	3.93		B5/B14
	368	3.0	15	4.75		B5/B14
	344	3.2	14	5.09		B5/B14
	307	3.6	13	5.70		B5/B14
	237	4.7	7.9	7.38		B5/B14
	222	5.0	7.4	7.88		B5/B14
	204	5.4	6.8	8.57		B5/B14
181	6.1	5.3	9.67	B5/B14		

0.25

71A4 (1750 min ⁻¹)	1110	2.1	18	1.58	PX-PU01	B5/B14
	915	2.5	15	1.91		B5/B14
	745	3.1	12	2.35		B5/B14
	700	3.3	11	2.50		B5/B14
	583	4.0	12	3.00		B5/B14
	549	4.2	11	3.19		B5/B14
	462	5.0	9.3	3.79		B5/B14
	445	5.2	8.9	3.93		B5/B14
	368	6.3	7.4	4.75		B5/B14
	344	6.7	6.9	5.09		B5/B14
	307	7.5	6.2	5.70		B5/B14
	237	10	3.8	7.38		B5/B14
	222	10	3.6	7.88		B5/B14
	204	11	3.3	8.57		B5/B14
181	13	2.5	9.67	B5/B14		

0.18

63B4 (1750 min ⁻¹)	1110	1.5	25	1.58	PU01	B5/B14
	915	1.8	20	1.91		B5/B14
	745	2.2	17	2.35		B5/B14
	700	2.4	16	2.50		B5/B14
	583	2.9	16	3.00		B5/B14
	549	3.0	15	3.19		B5/B14
	462	3.6	13	3.79		B5/B14
	445	3.7	12	3.93		B5/B14
	368	4.5	10	4.75		B5/B14
	344	4.9	9.6	5.09		B5/B14
	307	5.4	8.6	5.70		B5/B14
	237	7.0	5.3	7.38		B5/B14
	222	7.5	5.0	7.88		B5/B14
	204	8.2	4.6	8.57		B5/B14
181	9.2	3.5	9.67	B5/B14		

0.37

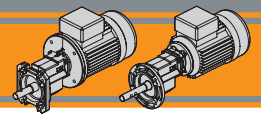
71B4 (1750 min ⁻¹)	1110	3.1	12	1.58	PX-PU01	B5/B14
	915	3.7	9.9	1.91		B5/B14
	745	4.6	8.1	2.35		B5/B14
	700	4.9	7.6	2.50		B5/B14
	583	5.9	7.9	3.00		B5/B14
	549	6.2	7.4	3.19		B5/B14
	462	7.4	6.3	3.79		B5/B14
	445	7.7	6.0	3.93		B5/B14
	368	9.3	5.0	4.75		B5/B14
	344	10	4.7	5.09		B5/B14
	307	11	4.2	5.70		B5/B14
	237	14	2.6	7.38		B5/B14
	222	15	2.4	7.88		B5/B14
	204	17	2.2	8.57		B5/B14
181	19	1.7	9.67	B5/B14		

0.22

63C4 (1750 min ⁻¹)	1110	1.8	20	1.58	PU01	B5/B14
	915	2.2	17	1.91		B5/B14
	745	2.7	14	2.35		B5/B14
	700	2.9	13	2.50		B5/B14
	583	3.5	13	3.00		B5/B14
	549	3.7	12	3.19		B5/B14
	462	4.4	10	3.79		B5/B14
	445	4.6	10	3.93		B5/B14
	368	5.5	8.4	4.75		B5/B14
	344	5.9	7.8	5.09		B5/B14
	307	6.6	7.0	5.70		B5/B14
	237	8.6	4.3	7.38		B5/B14
	222	9.2	4.1	7.88		B5/B14
	204	10.0	3.7	8.57		B5/B14
181	11.3	2.9	9.67	B5/B14		

0.55

71C4 (1750 min ⁻¹)	1110	4.6	8.1	1.58	PX-PU01	B5/B14
	915	5.6	6.7	1.91		B5/B14
	745	6.8	5.4	2.35		B5/B14
	700	7.3	5.1	2.50		B5/B14
	583	8.7	5.3	3.00		B5/B14
	549	9.3	5.0	3.19		B5/B14
	462	11	4.2	3.79		B5/B14
	445	11	4.1	3.93		B5/B14
	368	14	3.4	4.75		B5/B14
	344	15	3.1	5.09		B5/B14
	307	17	2.8	5.70		B5/B14
	237	21	1.7	7.38		B5/B14
	222	23	1.6	7.88		B5/B14
	204	25	1.5	8.57		B5/B14
181	28	1.2	9.67	B5/B14		



[IEC - 60 Hz - n_1 1750 min⁻¹]

P ₁ [kW]	n ₂ [min ⁻¹]	M ₂ [Nm]	sf	i		
------------------------	--	------------------------	----	---	---	---

P ₁ [kW]	n ₂ [min ⁻¹]	M ₂ [Nm]	sf	i		
------------------------	--	------------------------	----	---	---	---

0.55

80A4 (1750 min ⁻¹)	1110	4.6	8.1	1.58	PU01	B5/B14
	915	5.6	6.7	1.91		B5/B14
	745	6.8	5.4	2.35		B5/B14
	700	7.3	5.1	2.50		B5/B14
	583	8.7	5.3	3.00		B5/B14
	549	9.3	5.0	3.19		B5/B14
	462	11	4.2	3.79		B5/B14
	445	11	4.1	3.93		B5/B14
	368	14	3.4	4.75		B5/B14
	344	15	3.1	5.09		B5/B14
	307	17	2.8	5.70		B5/B14
	237	21	1.7	7.38		B5/B14
	222	23	1.6	7.88		B5/B14
	204	25	1.5	8.57		B5/B14
	181	28	1.2	9.67		B5/B14

1.1

80C4 90S4 (1750 min ⁻¹)	1110	9.2	4.1	1.58	PU01	B5/B14
	915	11	3.3	1.91		B5/B14
	745	14	2.7	2.35		B5/B14
	700	15	2.6	2.50		B5/B14
	583	17	2.7	3.00		B5/B14
	549	19	2.5	3.19		B5/B14
	462	22	2.1	3.79		B5/B14
	445	23	2.0	3.93		B5/B14
	368	28	1.7	4.75		B5/B14
	344	30	1.6	5.09		B5/B14
	307	33	1.4	5.70		B5/B14

0.75

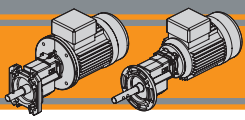
71D4 (1750 min ⁻¹)	1110	6.3	5.9	1.58	PX-PU01	B5/B14
	915	7.6	4.9	1.91		B5/B14
	745	9.3	4.0	2.35		B5/B14
	700	10	3.7	2.50		B5/B14
	583	12	3.9	3.00		B5/B14
	549	13	3.7	3.19		B5/B14
	462	15	3.1	3.79		B5/B14
	445	16	3.0	3.93		B5/B14
	368	19	2.5	4.75		B5/B14
	344	20	2.3	5.09		B5/B14
	307	23	2.1	5.70		B5/B14
	237	29	1.3	7.38		B5/B14
	222	31	1.2	7.88		B5/B14
	204	34	1.1	8.57		B5/B14

1.5

90B4 (1750 min ⁻¹)	1110	13	3.0	1.58	PU01	B5/B14
	915	15	2.4	1.91		B5/B14
	745	19	2.0	2.35		B5/B14
	700	20	1.9	2.50		B5/B14
	583	24	2.0	3.00		B5/B14
	549	25	1.8	3.19		B5/B14
	462	30	1.5	3.79		B5/B14
	445	31	1.5	3.93		B5/B14
	368	38	1.2	4.75		B5/B14
	344	40	1.2	5.09		B5/B14
	307	45	1.0	5.70		B5/B14

0.75

80B4 (1750 min ⁻¹)	1110	6.3	5.9	1.58	PU01	B5/B14
	915	7.6	4.9	1.91		B5/B14
	745	9.3	4.0	2.35		B5/B14
	700	10	3.7	2.50		B5/B14
	583	12	3.9	3.00		B5/B14
	549	13	3.7	3.19		B5/B14
	462	15	3.1	3.79		B5/B14
	445	16	3.0	3.93		B5/B14
	368	19	2.5	4.75		B5/B14
	344	20	2.3	5.09		B5/B14
	307	23	2.1	5.70		B5/B14
	237	29	1.3	7.38		B5/B14
	222	31	1.2	7.88		B5/B14
	204	34	1.1	8.57		B5/B14



PX-PU

Motoriduttori monostadio Single stage gearmotors

Dimensioni

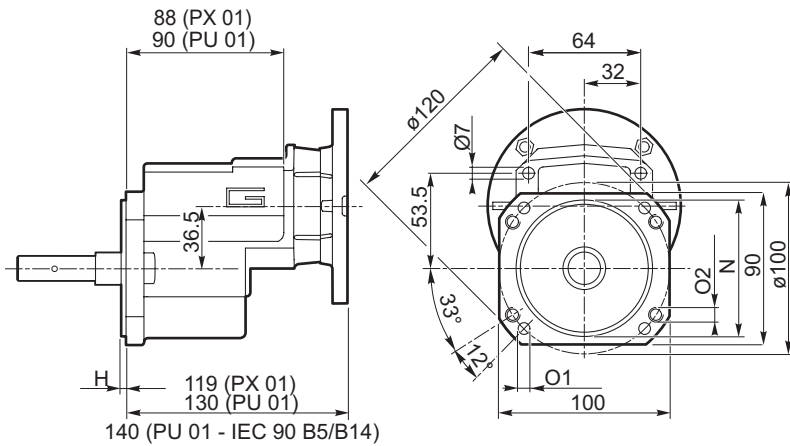
Dimensions

Abmessungen

Dimensiones

Dimensões

尺寸规格



Kg 2.4 - 2.8

Versione riduttore Gearbox version Getriebeversion Versión reductor versao redutor 产品型号	N h7	H	O1	O2	
PX01 PU01	U	80	3.5	Ø7 - n°4	M8 - n°4
	U1	85	3.5	M8 - n°4	Ø7 - n°4
	U2	80	3.5	M8 - n°4	M8 - n°4
	U3	80	3.5	Ø9 - n°4	Ø7 - n°4
	U4	\	\	M8 - n°4	Ø7 - n°4
U5	\	\	Ø7 - n°4	M8 - n°4	

Nota: Per la scelta delle flange e degli alberi in uscita preghiamo di riferirsi alle pagine seguenti. Se non sono presenti i componenti desiderati ricordiamo che è possibile personalizzarli secondo le Vostre specifiche.

Note: Please see the following pages for the output shafts and flanges available. If you can't find the right components, we can customize them on request.

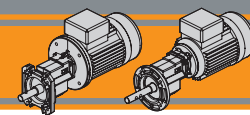
Anmerkung: Auf folgenden Seiten sehen Sie erhältliche Abtriebswellen und -flansche. Wenn Sie keine richtige Variante finden, können wir individuelle Kundenanpassung anbieten.

Nota: Para elegir bridas y ejes de salida rogamos hagan referencia a las páginas siguientes. Si los componentes que desean no están presentes, recordamos que es posible personalizarlos según sus necesidades.

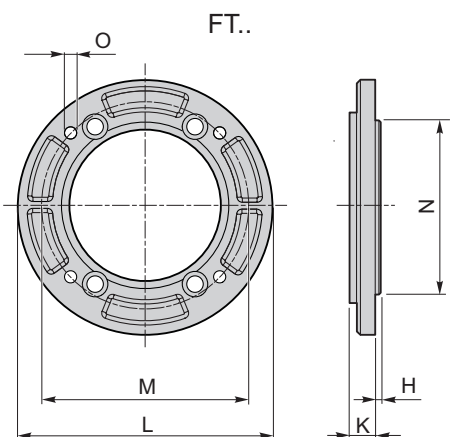
Nota: Para a escolha das flanges e dos eixos de saída pedimos de observar as próximas páginas. Se os componentes necessitados não se fazem presentes, lembramos que é possível personalizar-los de acordo com as vossas especificações.

注解: 适配的输出轴和输出法兰请见下一页, 如果从中找不到适合的部件, 我们可按客户要求定制。

Preferenziali - Preferred - Vorzugsabtriebswellen - Preferencial - Preferencial - 首选

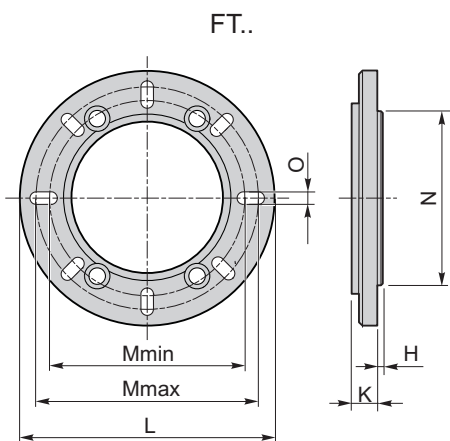


Dimensioni Dimensions Abmessungen Dimensiones Dimensões 尺寸规格

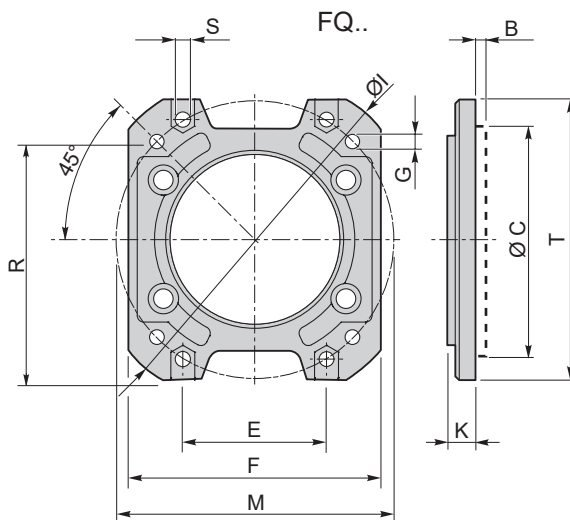


Dimensioni Dimensions Abmessungen Dimensiones Dimensões 尺寸规格	L	M	N f7	O	K	H	Kg	
PX01 PU01	FT1	140	115	95	M8	14	3	0.27
	FT5	140	115	/	M8	14	/	0.27
	FT2	160	130	110	9	14	3.5	0.38
	FT4	160	130	/	9	14	/	0.38
	FT3	200	165	130	11	14	3.5	0.58
	FT9	200	165	/	11	14	/	0.58

PX-PU

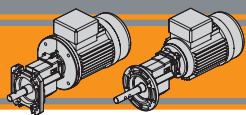


Dimensioni Dimensions Abmessungen Dimensiones Dimensões 尺寸规格	L	M	N f7	O	K	H	Kg	
PX01 PU01	FT7	140	115-130	95	8.5	18	3	0.32
	FT6	145	115-130	95	8.5	18	3	0.34
	FT10	140	115-130	/	8.5	18	/	0.32



Dimensioni Dimensions Abmessungen Dimensiones Dimensões 尺寸规格	F	T	M	G	E	R	S	I	K	C	B	Kg	
PX01 PU01	FQ1	116	129	127	M8	66	110	7	154	18	/	/	0.28
	FQ3	116	129	127	M8	66	110	7	154	15.5	90	2.5	0.28
	FQ4	150	150	165	11	/	/	/	200	14			0.40
	FQ5	116	129	127	5/16" UNC	66	110	7	154	18			0.28
	FQ6	116	129	127	8	66	110	7	154	18			0.28

Preferenziali - Preferred - Vorzugsabtriebswellen - Preferencial - Preferencial - 首选



PX-PU

Motoriduttori monostadio Single stage gearmotors

Dimensioni

Dimensions

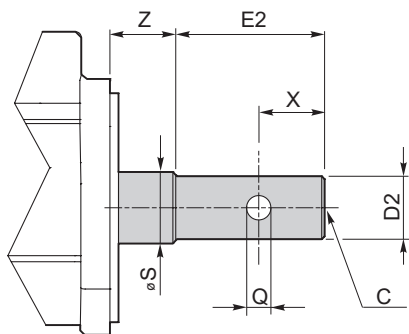
Abmessungen

Dimensiones

Dimensões

尺寸规格

Alberi d'uscita / Output shafts / Abtriebswellen / Ejes de salida / Eixo de saída / 输出轴



Dimensioni Dimensions Abmessungen Dimensiones Dimensões 尺寸规格	D2	E2	X	Z	Q	C	S
O53	15.85	58	19	21.8	6.35	-	25
O69	15.88	60	19.05	5.5	6.35	-	25
O100	15.88	54.6	19.1	21.8	6.35	-	25
O16	16	50	21	18	7	-	25
O17	16	50	21	19	6.5	-	25
O32	16	40	10	14	6.4	-	25
O68	16	50	21	18	8	-	25
O80	16	77	52.5	23	7	-	25
O54	17	48	18	20	6	-	25
O55	17	48	18	20	8	-	25
O86	18	50	20.5	18	7	-	25
O96	18	80	21.5	17	8.5	-	25
O4	19	60	23	23	6.5	-	25
O5	19	44.1	13.5	9.9	6.5	-	25
O6	19	82	30	30.5	8.5	-	25
O10	19	80	21.5	17	8.5	-	25
O13	19	100	50	9.9	6.5	-	25
O23	19	58	24	18	8	-	25
O34	19	40	13	0	6.5	-	25
O41	19	100	50	9.9	M8	-	25
O46	19	60	23	23	8	-	25
O48	19	100	50	9.9	8	-	25
O57	19	57	23	18	6.5	-	25
O61	19	40	14	21	6.5	-	25
O72	19	58	19	21.8	6.35	-	25
O33	19.7	100	50	4.5	6	M8	25
O8	20	103	50	20	7	M6	25
O9	20	84	30	13	6	-	25
O26	20	40	9	14	8.5	-	25
O30	20	50	25	17.5	6	-	25
O67	20	100	50	18	6.5	-	25
O71	20	70	20	18	6.5	-	25
O97	20	54	10	14	8	-	25
O73	20	58	19	21.8	6.35	-	25
O11	20	50	25	50	6	-	30
O101	20.62	72.90	31.8	25.4	8	-	25
O14	21	52	23	9	6	-	25
O20	21	50	25	17.5	6	-	25
O58	21	47.8	15	18	6	-	25
O59	21	50	17	18	9	-	25
O66	21	62	28	14	6	-	25
O88	21	74	20	9	6	-	25
O89	21	65	23.3	9	6.1	-	25
O1	22	52	23	23	8.5	-	25
O18	22	57	23	18	8.5	-	25
O45	22	60	24	19	8.5	-	25
O79	22	35	15	0	8	-	25
O81	22	52	27.5	23	8	-	25
O83	22	35	14	0	0	-	25
O95	22	50	20	18	8.2	-	25
...	-	...

PX01 U/F
PU01 U/F

Preferenziali - Preferred
Vorzugsabtriebswellen - Preferencial
Preferencial - 首选

Note: Alberi non in tabella eseguibili a richiesta. La quota Z si riferisce alla versioni U e U1. Se si sceglie la versione con flangia d'uscita la quota Z si riduce della quota K indicata nella pagina 9.

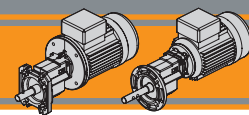
Note: Output shafts not shown in the table are available on request. Dimension Z refers to U and U1 versions. For the output flange version, dimension Z must be reduced from dimension K shown on page 9.

Anmerkung: Die Abtriebswellen, die in der Tabelle nicht vorhanden sind, können auf Anfrage angeboten werden. Die Abmessung Z für die Versionen U und U1. Für die Version mit Abtriebsflansch, muss die Abmessung Z um den Maß K, auf der Seite 9 gezeigt, reduziert werden.

Nota: los ejes no presentes en la tabla son realizables bajo petición. La medida Z se refiere a la versión U y U1. Si selecciona la versión con brida de salida, la medida Z se reduce de la medida K indicada en la página 9.

Nota: Os eixos não relacionados são disponibilizados mediante a solicitação especial. O campo Z se refere a versão U e U1. Caso seja escolhida a versão com flange de saída o campo Z se reduz ao campo K, veja a página 9.

注解: 输出轴可按客户要求定制; 尺寸Z仅适用于U和U1型式; 如所选型号带输出法兰, 尺寸Z需减去输出法兰厚度K(尺寸K见第9页)。



Dimensioni

Dimensions

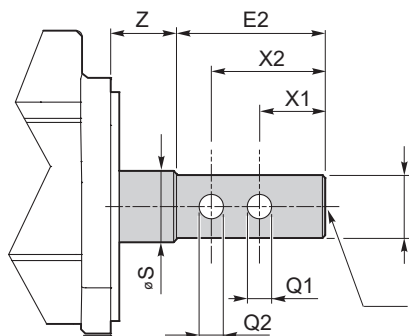
Abmessungen

Dimensiones

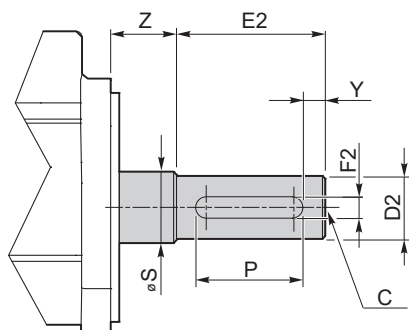
Dimensões

尺寸规格

Alberi d'uscita / Output shafts / Abtriebswellen / Ejes de salida / Eixo de saída / 输出轴



Dimensioni Dimensions Abmessungen Dimensiones Dimensões 尺寸规格	D2	E2	X1	X2	Z	Q1	Q2	C	S	
PX01 U/F	O44	16	65	23.25	38.25	28	6.5	6.5	-	25
PU01 U/F	O15	19	92	30	48	20.5	8.5	8.5	-	25
	O40	19	92	30	48	15.5	8.5	8.5	-	25
	O62	19	60	30	46	23	6.6	6.5	-	25
	O75	19	100	44	59	12.5	6.5	6.5	-	25
	O98	19	103	23	56	18	6.5	5-16" 18 UNC-2B	-	25
	O12	19.7	100	30	50	4.5	6	6	M8	25
	O31	19.7	90	30	50	13.5	6.5	6.5	-	25
	O38	19.7	100	30	50	4.5	6	6	-	25
	O29	20	60	20	35	4.5	5.5	5.5	-	25
	O37	20	70	20	40	18	8	6	-	25
	O39	20	58	23	38	18	8.5	8.5	-	25
	O47	20	76	22	32	22	6.8	6.8	-	25
	O64	20.2	78.2	36.3	52.8	20	7	7	-	25
	O56	20.3	74.7	36.6	52.5	25.9	5.6	5.6	-	25
	O35	20.5	65	12	42	14	5-16" 18 UNC-2B	5-16" 18 UNC-2B	-	25
	O60	22	58	23	38	18	8.5	8.5	-	25
	O52	23	44	9	35	30	M6	M6	-	25
	O99	25	110	43.5	59.5	14	8.5	8.5	-	30
	O87	28.5	100	44	59	12.5	8.5	8.5	-	30



Dimensioni Dimensions Abmessungen Dimensiones Dimensões 尺寸规格	D2	E2	Y	F2	P	Z	C	S	
PX01 U/F	O92	11	23	3.5	4	16	14	M4	25
PU01 U/F	O2	14	30	2.5	5	25	14	-	25
	O50	14	30	2.5	5	25	0	-	25
	O91	15.875	57.2	0	4.76	40.5	9.2	1-4" 20 UNC	25
	O3	19	40	3	6	30	0	M6	25
	O22	19	40	3	6	30	18	M6	25
	O43	19	40	3	6	30	5	M6	25
	O84	19	40	2.5	6	35	14	-	25
	O78	19.05	54.1	0	4.76	40.5	28.4	1-4" 20 UNC	25
	O77	19.05	54.1	0	4.76	40.5	9.4	1-4" 20 UNC	25
	O24	20	40	3	6	30	18	M6	25
	O25	20	40	3	6	30	14	M6	25
	O19	20	40	5	6	30	14	-	25
	O70	24	48	5	8	40	2	-	25
	O21	24	50	5	8	40	14	-	30
	O82	24	50	5	8	40	3.5	M8	30
	O102	28	60	5	8	50	14	-	30
	O103	28	56.5	3	8	50	3.5	-	30
	-	...

Note: Alberi non in tabella eseguibili a richiesta. La quota Z si riferisce alla versioni U e U1. Se si sceglie la versione con flangia d'uscita la quota Z si riduce della quota K indicata nella pagina 9.

Note: Output shafts not shown in the table are available on request. Dimension Z refers to U and U1 versions. For the output flange version, dimension Z must be reduced from dimension K shown on page 9.

Anmerkung: Die Abtriebswellen, die in der Tabelle nicht vorhanden sind, können auf Anfrage angeboten werden. Die Abmessung Z für die Versionen U und U1. Für die Version mit Abtriebsflansch, muss die Abmessung Z um den Maß K, auf der Seite 9 gezeigt, reduziert werden.

Nota: los ejes no presentes en la tabla son realizables bajo petición. La medida Z se refiere a la versión U y U1. Si selecciona la versión con brida de salida, la medida Z se reduce de la medida K indicada en la página 9.

Nota: Os eixos não relacionados são disponibilizados mediante a solicitação especial. O campo Z se refere a versão U e U1. Caso seja escolhida a versão com flange de saída o campo Z se reduz ao campo K, veja a página 9.

注解: 输出轴可按客户要求定制; 尺寸Z仅适用于U和U1置式; 如所选型号带输出法兰, 尺寸Z需减去输出法兰厚度K(尺寸K见第9页)。

PX-PU



**TRANSTECNO SRL
HEADQUARTERS**

Company subject to the management
and coordination of INTERPUMP GROUP SPA
Via Caduti di Sabbiano, 11/D-E
40011 Anzola dell'Emilia (BO)
ITALY
T+39 051 64 25 811
F +39 051 73 49 43
sales@transtecno.com
www.transtecno.com

TRANSTECNO®
the modular gearmotor

MEMBER OF INTERPUMP GROUP

CATPOULTRY0922 TTN



**HANGZHOU TRANSTECNO POWER
TRANSMISSIONS CO LTD**
No.4 Xiuyan Road Fengdu Industry Zone
Pingyao Town Yuhang District
Hangzhou City, Zhejiang Province 311115 – CHINA
T +86 571 86 92 02 60
info-china@transtecno.cn
www.transtecno.cn



MA TRANSTECNO S.A.P.I. DE C.V.
Av. Mundial # 176, Parque Industrial
JM Apodaca, Nuevo León, C.P. 66600 – MÉXICO
T +52 8113340920
info@transtecno.com.mx
www.transtecno.com.mx



**TRANSTECNO IBÉRICA
THE MODULAR GEARMOTOR, S.A.**
Carrer de la Ciència, 45
08840 Viladecans (Barcelona) – SPAIN
T +34 931 598 950
info@transtecno.es
www.transtecno.es



TRANSTECNO B.V.
Siliciumweg 32
3812 SX Amersfoort – NETHERLANDS
T +31(0) 33 45 19 505
info@transtecno.nl
www.transtecno.nl

TRANSTECNO AANDRIJFTECHNIEK B.V.
Siliciumweg 32
3812 SX Amersfoort – NETHERLANDS
T +31(0) 33 20 47 006
info@transtecnoaandrijftechnik.nl
www.transtecnoaandrijftechnik.nl



TRANSTECNO USA
8 Creek Parkway,
Boothwyn PA 19061-8136 - UNITED STATES
T + 1 (610) 4970154

TRANSTECNO USA – WEST COAST BRANCH
14561 Frylands Blvd SE
Monroe, WA 98272 - UNITED STATES
T +1 360-863-1300
usaoffice@transtecno.com
www.transtecno.com



TRANSTECNO CANADA
51 B Caldari Road Unit 10
Vaughan, ON L4K 4G3 - CANADA
T +1 905 761 0762
canadaoffice@transtecno.com
www.transtecno.com



TRANSTECNO CHILE-PERU
Av. Los Libertadores 41
Parque Industrial - Los Libertadores 16.500
Santiago, Colina - CHILE
T +56 2 29633870

Carretera Panamericana Sur KM 29.5,
Interior I-3, Z.I. Lurin - PERU
T +51 1 3546259 / + 51 1 3434231
chileoffice@transtecno.com
www.transtecno.com



SALES OFFICE OCEANIA
Unit 5, 12 Nyholt Drive, Yatala 4207, Queensland - AUSTRALIA
T +61 07 3800 0103
M +61 04 38060997
UNIT 9, 94 Boundary Rd, Sunshine West 3020, Victoria - AUSTRALIA
T +61 9312 4722
oceaniaoffice@transtecno.com
www.transtecno.com.au



TRANSTECNO INDIA
#6A, Sipcot Industrial complex, Phase-1, Elasagiri Road
Hosur – 635126 Tamilnadu – INDIA
T +91 4344 274434
M +91 81443 88800

TRANSTECNO INDIA – NORTH BRANCH
Plot No: 3 A, Sector 2, IIE, Sidcul, Pantnagar
U.S. Nagar, Uttarakhand – 263153 – INDIA
indiaoffice@transtecno.com
www.transtecno.com



TRANSTECNO BRAZIL
Rua Gilberto de Zorzi, 525 Forqueta - CEP. 95115-730
CX Postal 3544 Caxias do Sul RS – BRAZIL

TRANSTECNO BRAZIL – SÃO PAULO BRANCH
R. Mafalda Barnabe Soliano, 314 – CEP. 13347-610
Indaiatuba, São Paulo – BRAZIL
T +55 19 3437 2520

TRANSTECNO BRAZIL – PORTO ALEGRE BRANCH
Rua Dr. Freire Alemão 155 / 402 - CEP. 90450-060
Auxiliadora Porto Alegre RS - BRAZIL
T +55 51 3251 5447
M +55 51 811 45 962
braziloffice@transtecno.com
www.transtecno.com.br



SALES OFFICE SOUTH KOREA
772-41. Bongdong-ro, Bongdong-eup, Wanju-goon
Chonbuk, 55313
SOUTH KOREA
T +82 70 8867 8897
M +82 10 5094 2107
koreaoffice@transtecno.com
www.transtecno.com

www.transtecno.com
www.poultrytecno.net